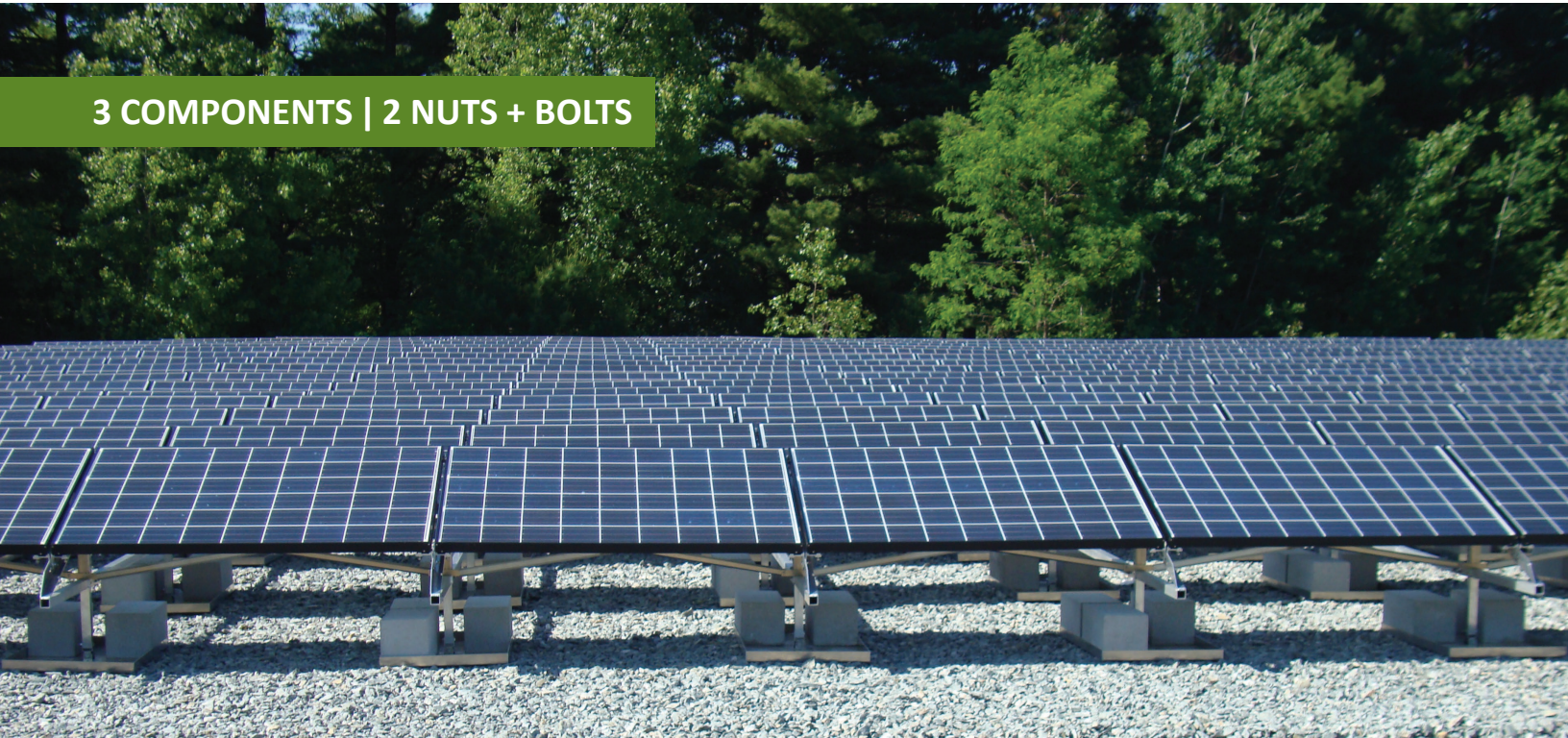


Panda Bear

Ballasted Ground Mount Solution

3 COMPONENTS | 2 NUTS + BOLTS

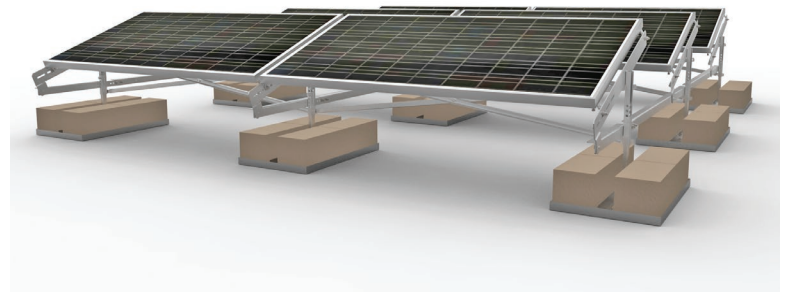


Smart Non-Penetrating Solution

Panda Bear® ground mount system is an eco-friendly, ballasted mounting solution ideal for landfills and installations where the ground cannot be penetrated. Its streamlined design features just three major components and significant factory pre-assembly--innovations that turn construction projects into simple installations.

Suits Challenging Ground Applications

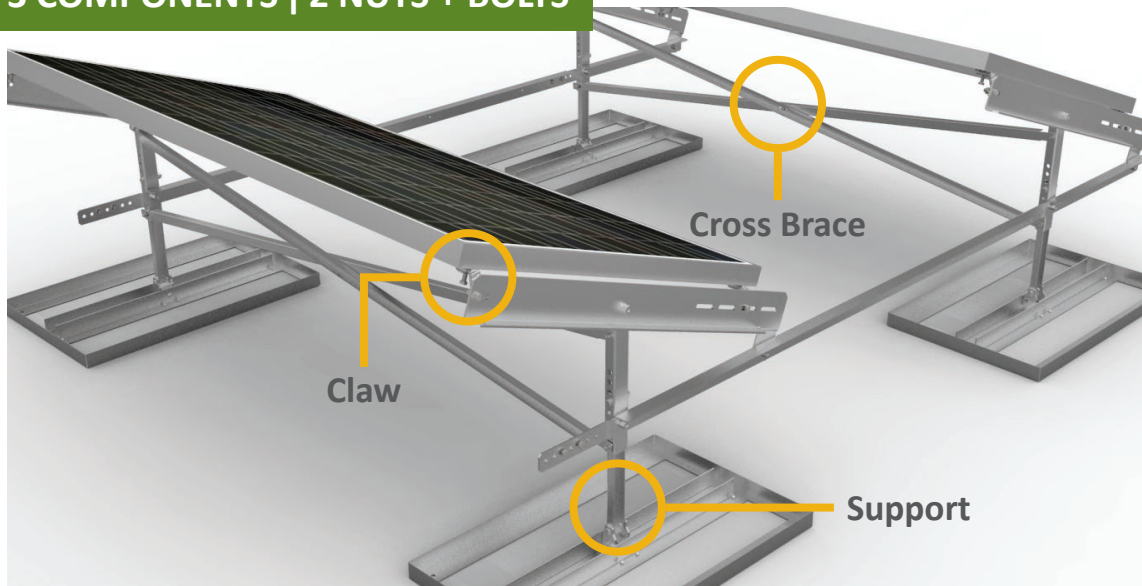
- Low, evenly distributed platform loads
- No piles or drilling required
- Adjustable posts to accommodate ground undulations
- Allows free water flow and natural drainage



Panda Bear Ballasted Ground Mount Solution



3 COMPONENTS | 2 NUTS + BOLTS



Overcome Land Constraints

The Panda Bear ballasted design allows for solar installation on poor soil conditions. The Supports are equipped with features to address uneven terrain and ground undulations, including an adjustable post to address variations in surface height and a ballast tray that automatically conforms to the ground slope. The system's modular design allows for easy array layout adjustments and ability to fit into odd shaped areas of land. These features give installers extensive in-field options, further boosting installation speed and overall project efficiency.

For Product and Sales Information:

978.688.4900

sales@panelclaw.com

www.panelclaw.com

Three Components

Support

- Ballast pan, post, and bracket pre-assembled
- Adjustable posts and pivoting ballast pan accommodates uneven terrain
- Pre-installed PEM® studs for easy cross brace attachment
- Available in aluminum or G90 steel

Cross Brace

- Factory pre-assembled to speed installation
- Chamfered edges and light-weight construction facilitate easy handling and safe installation
- Slotted mounting holes to accommodate uneven terrain

Claw

- Factory-installed stainless steel screw to attach Claw to Module
- UL 2703 certified for electric bonding and grounding

Specifications

Application

Landfill, brownfields, open fields

Installation Speed

140-180 modules per day (4 person crew)

Module Tilt Angle

10, 20, 30 degrees

Module Orientation

Landscape

Basic Wind Speed

Up to 120 MPH
(193 km/h)

Wind Exposure Category

B and C
(D upon request)

Array Platform Load

7 - 12 PSF (racking, ballast, and modules)

Standard Warranty

10 years



Made in USA

© 2013 PanelClaw, Inc.



Printed on recycled paper